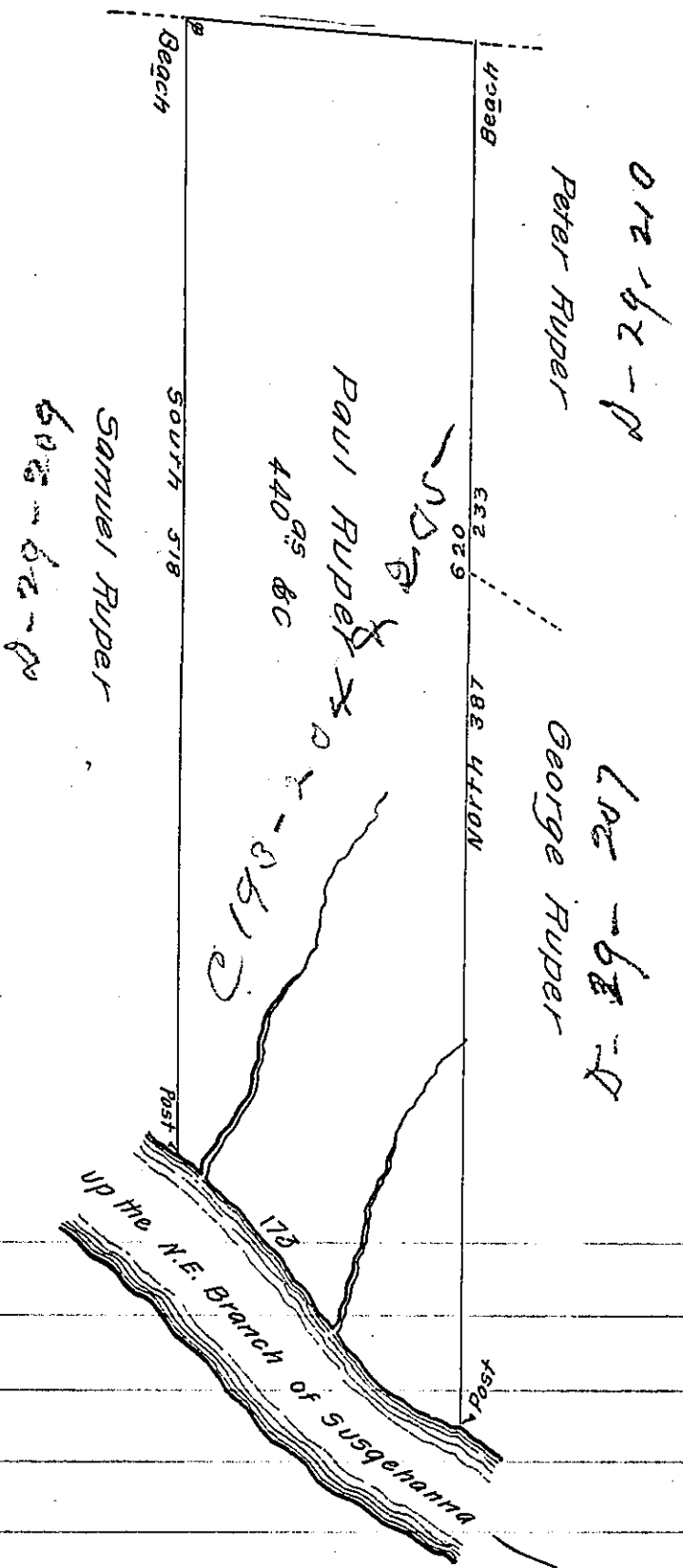


FORM NO 1.

D-30-293  
Wm Moulder



A Draught of a tract of land called ——— situate on the N.E. Branch  
of Susqu<sup>a</sup> — in the Great Bend joining land of Sam<sup>l</sup>. Ruper &  
others in North<sup>a</sup> — Containing Four hundred & forty acres & allowance of  
six <sup>1</sup>/<sub>100</sub> Cent for roads &c. Surv<sup>d</sup> for Paul Ruper the 28<sup>th</sup> day of May  
1785 in pursuance of a Warrant dated the 4<sup>th</sup> day of April 1785.

To John Lukens Esqr. } by Wm Gray D.S.  
Surv<sup>t</sup>. Genl. }

IN TESTIMONY that the above is a copy of the original remaining on file in  
the Department of Internal Affairs of Pennsylvania, made  
conformably to an Act of Assembly approved the 16th day of  
February, 1833, I have hereunto set my Hand and caused  
the Seal of said Department to be affixed at Harrisburg,  
this twenty-seventh day of January 1908.

*Henry Howell*  
Secretary of Internal Affairs.